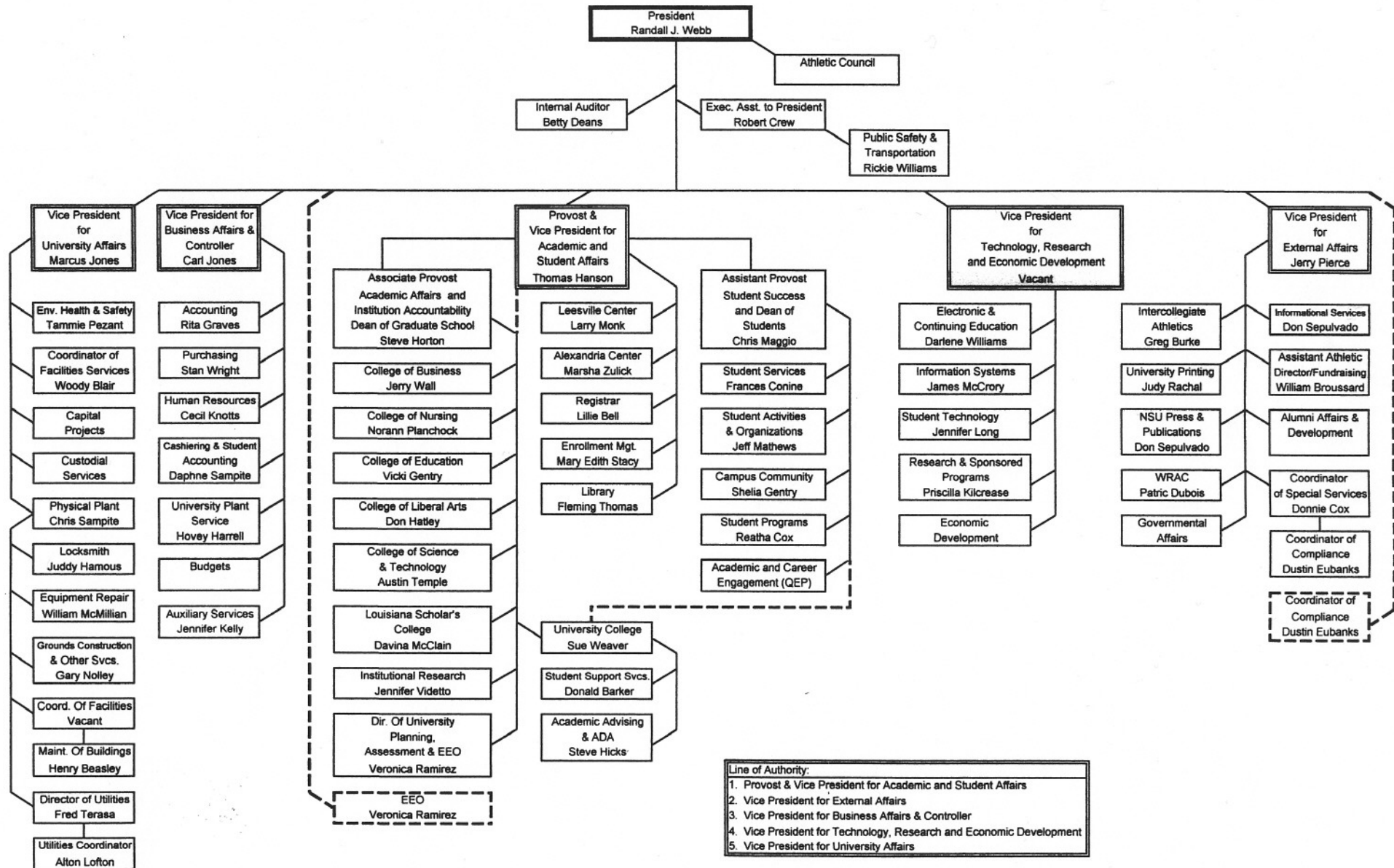


ORGANIZATIONAL CHART FOR NORTHWESTERN STATE UNIVERSITY
Board of Supervisors for the University of Louisiana System

September 1, 2007



Line of Authority:
 1. Provost & Vice President for Academic and Student Affairs
 2. Vice President for External Affairs
 3. Vice President for Business Affairs & Controller
 4. Vice President for Technology, Research and Economic Development
 5. Vice President for University Affairs